



Imagine ...

Living better.

Living stronger.

Living in community.

Imagine ...

UPLIFT
Florida  **Network**

Board Members



Emile Gauvreau
President



Cynthia Kemp
Vice President



Bill Little
Treasurer



Rachel Rivlin
Secretary



Carol Levy



Pam Mahoney



LaVerne Green

Ex-Officio



Sue Berger
Aging System Policy
Coordinator
Sarasota County
Government



Deborah Gauvreau
Consultant
The Patterson Foundation



Brenda McKay
UPLIFT Volunteer



Kiarra Louis
Consultant
The Patterson Foundation

History of UPLIFT



Deborah Gauvreau

Initiative Consultant, The Patterson Foundation

Bio: Deborah Gauvreau works with people and organizations interested in identifying and realizing community aspirations. She has been working with The Patterson Foundation since 2013 with a variety of initiatives. Her work is consistently attuned to moving from vision to action through group process involving learning more, assessing needs and assets, identifying what is important, and implementing meaningful change.



Insights on the national village movement



Barbara Hughes Sullivan

Executive Director, National Village to Village Network

Bio: In June 2018, Barbara was appointed the Executive Director for the Village to Village Network (VTVN). VTVN is the national association that represents 350 Villages throughout the United States and four countries around the world in the Village Movement's model for aging.



Insights on reimagining villages



Joel Shapiro

Chief Orchestrator and Founder of BeyondAge

Bio: Joel Shapira helps tech-enabled services companies with business growth acceleration. A long-time member of the Village to Village Network Board and with over a decade's experience with villages, Joel now leads “Reimagining Villages” a national initiative focusing on developing new programs and strategic partnerships to expand the possibilities of “neighbors helping neighbors”.

Insights on the aging landscape



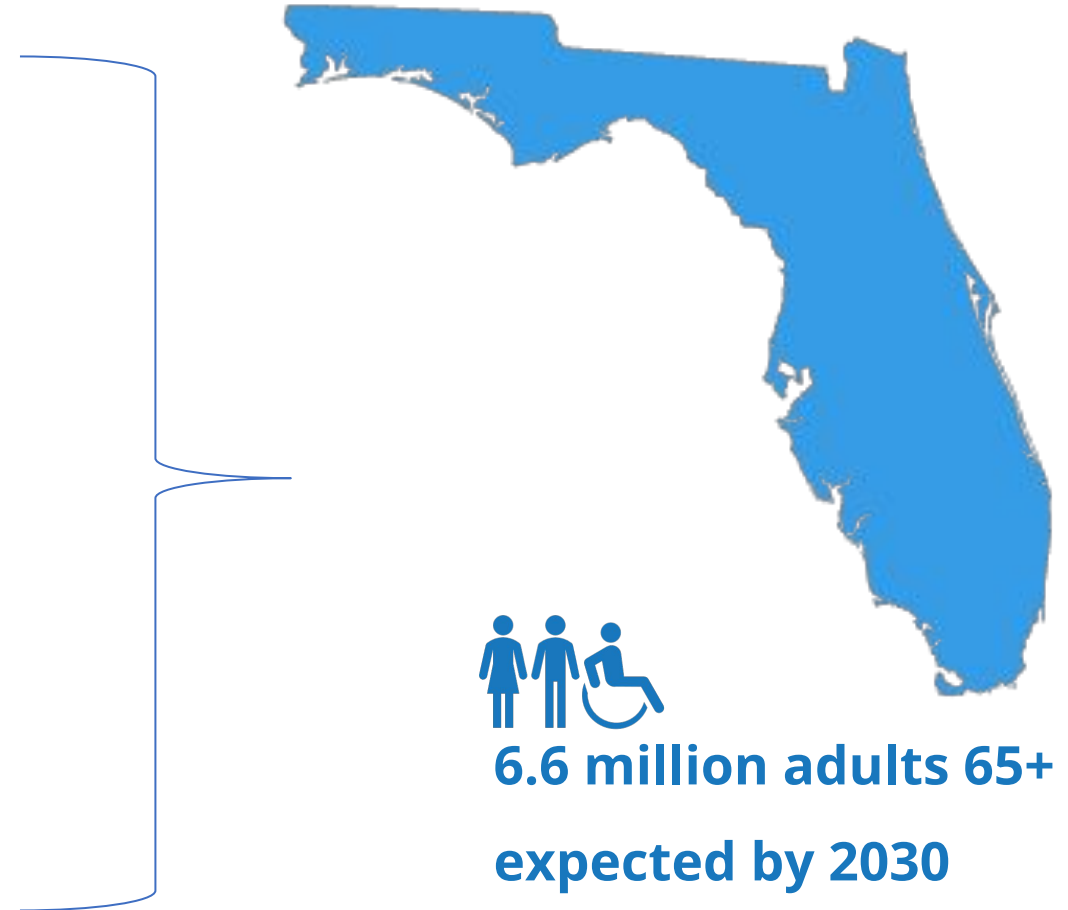
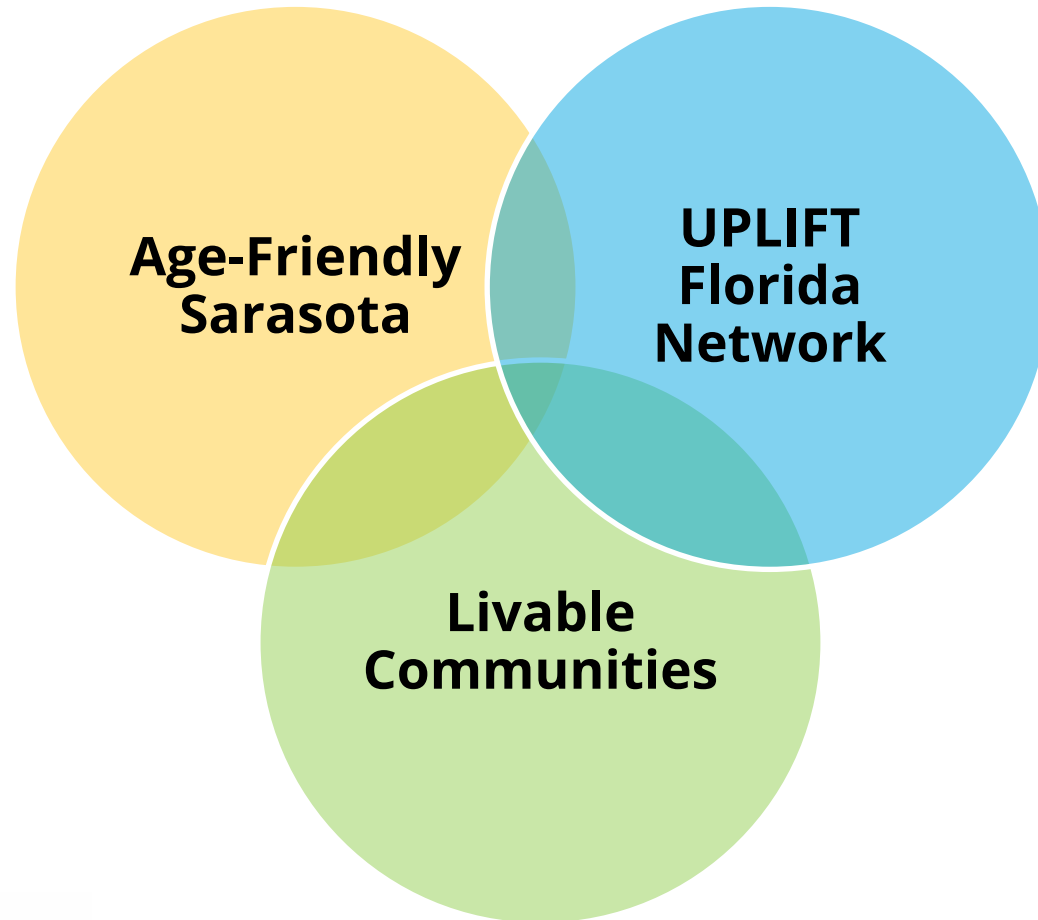
Sue Berger

Aging System Policy Coordinator,
Sarasota County Government

Bio: Sue Berger's professional background includes more than 35 years working with older adults, most recently at the Senior Friendship Centers where she spent 20 years working in program areas across multiple counties. In her role with Sarasota County, Sue continues the work of the [Age-Friendly Sarasota](#): A Community for All Ages Initiative.



Connecting aging initiatives



Insights on community collaborations



David Blehar

Chief Financial Officer/Chief Operating Officer,
Senior Friendship Centers

Bio: David Blehar has worked with [Senior Friendship Centers](#) for 23 years and currently serves as their Chief Financial Officer and Chief Operating Officer. David has 28 years of non-profit experience ranging from mental health, hospital, and aging services. He has managed Federal and State contracts, prepared annual budgets for non-profits ranging up to \$35 million, and participated in strategic planning.



Insights on hub-and-spoke model



Lyn Trainer

Managing Director, Villages Northwest

Bio: A summer job in the Volunteer Services office at Oregon Health & Sciences University led Lyn to a career in nonprofits at Doernbecher Children's Hospital Foundation and several professional associations. One of the first employees hired when Doernbecher Children's Hospital Foundation resurrected its community-based fundraising activities after a 50-year hiatus, she was privileged to be part of the team that built the new hospital which opened in 1998. Lyn joined the Villages NW Board in December 2015 and has served as Managing Director since 2016.



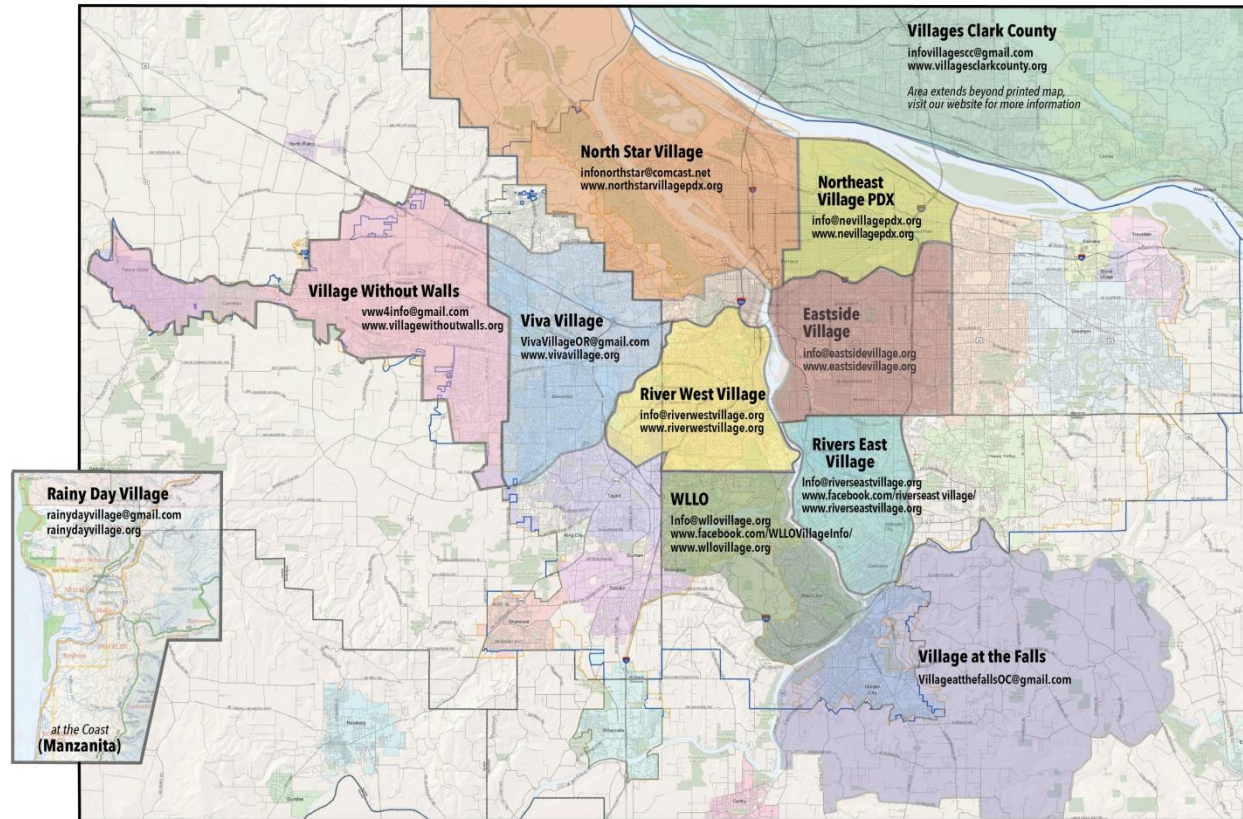


Villages NW

Hub and Spoke Model

Greater Portland Metro Area

Villages NW, Portland Metro Area Map, 2019



For a centralized website and resource about all our villages, visit www.villagesnw.org *Village borders may extend beyond the edge of this map.

Villages NW

Our Stats

- 10 Villages in Greater Portland Area
- 1 in development, Oregon Coast
- 660 members
- 600 volunteers, half are members
- 140 leaders
- 90 activities and events monthly
- 3,476 services in 2021

Advantages of Hub and Spoke Model

- Consistent brand across metro area of 2,500,000
- Villages focus on members, volunteers, programming, services
- Administrative support: Accounting, insurance, tax filings, annual appeal, IT, HR, shared policies & procedures
- Collective planning for sustainability and growth
- Affinity groups for mutual support and mentoring
- Shared programming



Lyn Trainer, ltrainer@villagesnw.org

503-515-1948

www.VillagesNW.org

Insights on a Florida network of villages



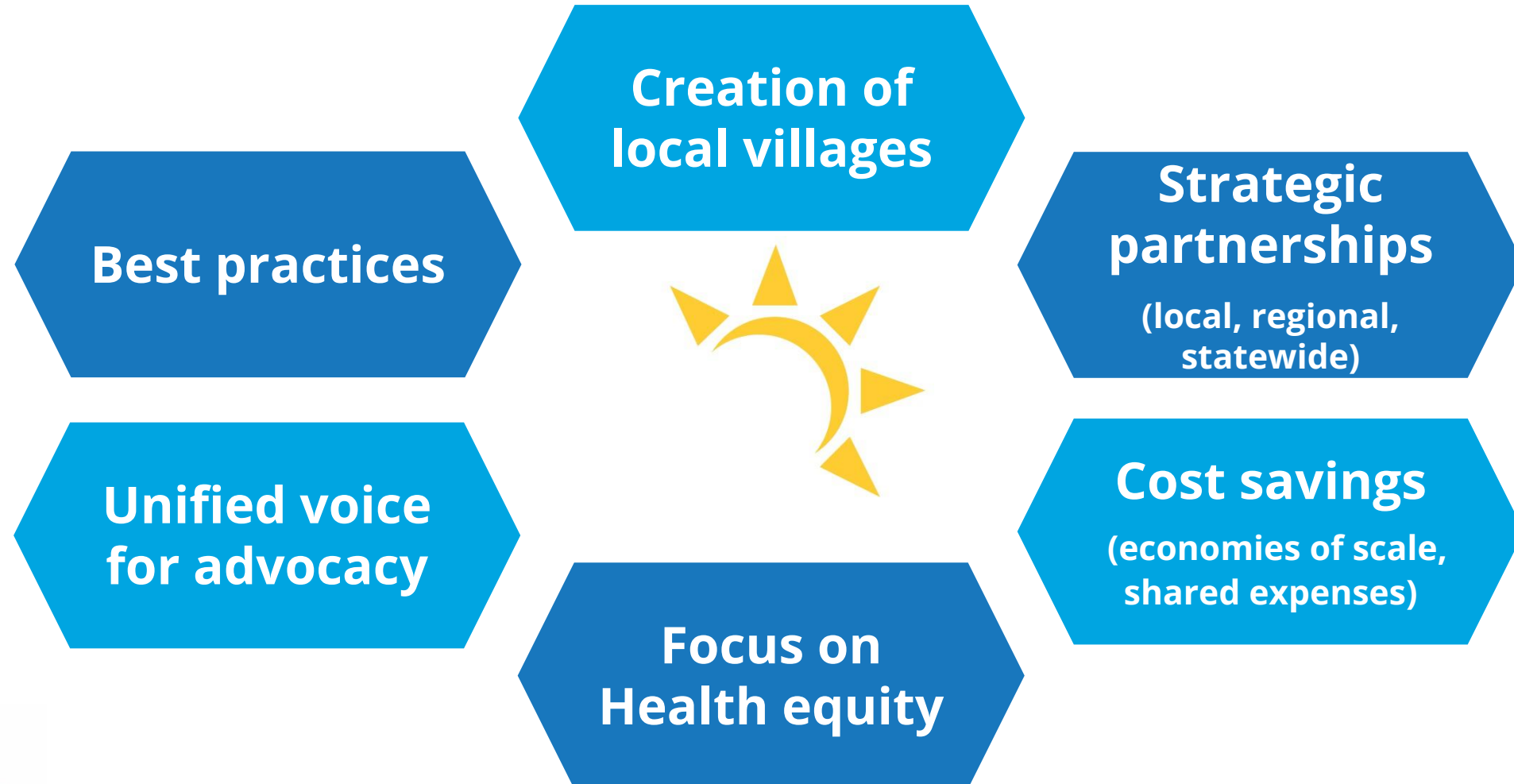
Annette Kelly

Board President, Neighbors Network, Inc.

Bio: As an RN with a deep interest in gerontology and community services for elders, Annette was actively engaged in Adult Day Care, and was the CEO of the Central & North Florida Alzheimer's Association (1992-2003). Annette played a key role in the development of Community involvement includes a research role in the development of Neighbors Network, a village in central Florida that supports aging in place for older adults at home.



Benefits of the UPLIFT network



Join us on April 12th



UPLIFT Village Formation Orientation

Tuesday, April 12, 2022
9:00 – 10:00 am

Register [here](#)

Zoom information



<https://us02web.zoom.us/j/81908751220>

Meeting ID: 819 0875 1220

Learn more, stay in touch



**Request a
presentation**



**Sign up for our
newsletter**

Questions and conversation

